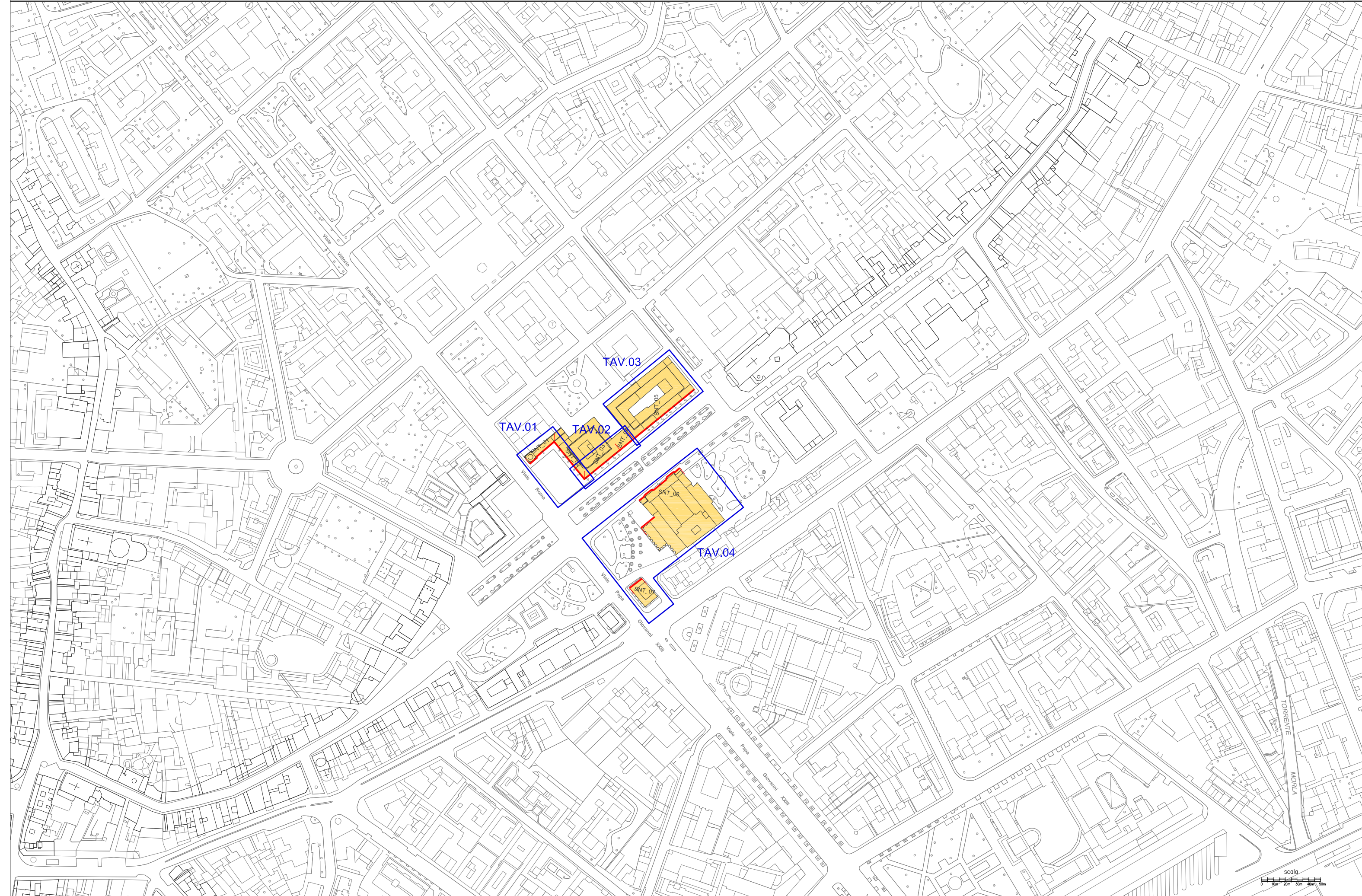


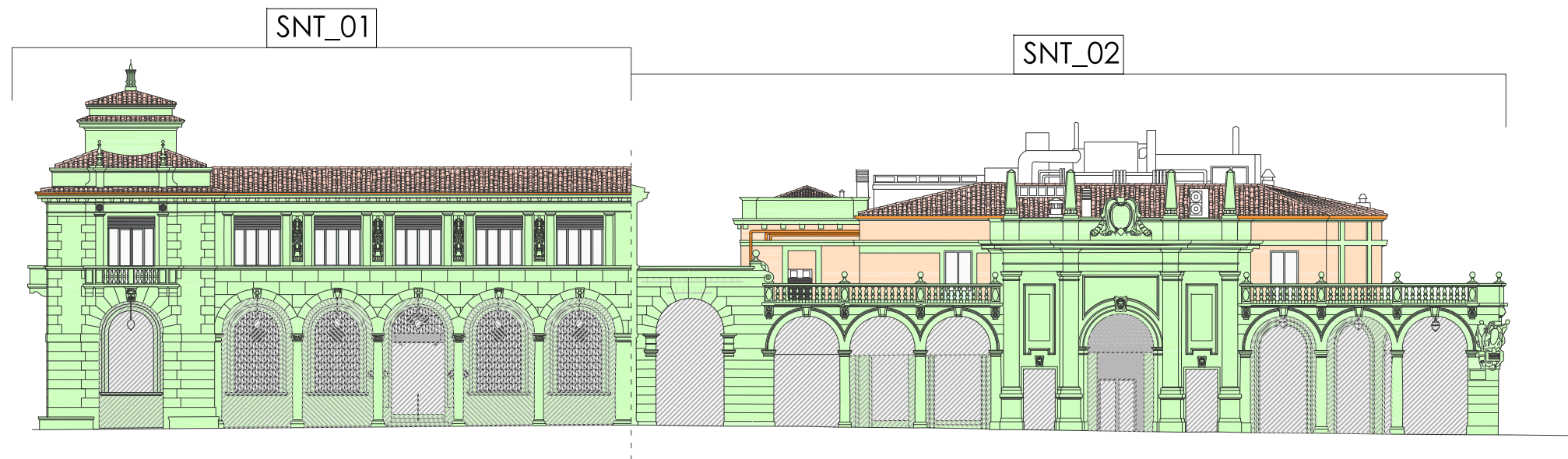
SENTIERONE

INQUADRAMENTO SENTIERONE_SNT



MAPPATURA MATERIALI

TAV. 01 SNT- mappatura materiali



SNT_01

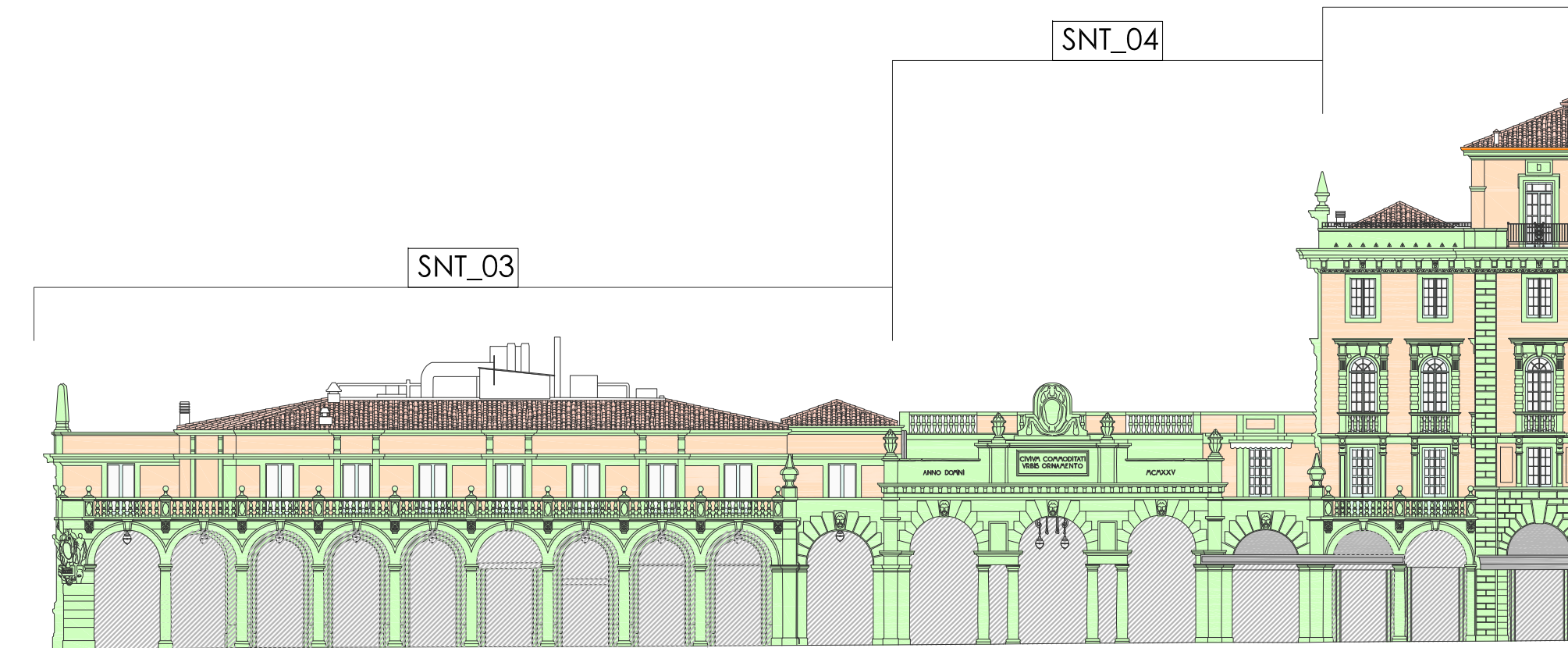
SNT_02

Legenda Materiali

- Intonaco
- Materiale lapideo
- Cemento strallato
- Litocemento
- Metallo
- Legno
- Laterizi
- Dipinti (trompe l'oil, finte finestre, ecc.)
- Stucchi
- Targhe varie (nomi vie+numeri civici)
- Latteneria
- Muratura mista



TAV. 02 SNT- mappatura materiali



Legenda Materiali

- Intonaco
- Materiale lapideo
- Cemento strallato
- Litocemento
- Metallo
- Legno
- Laterizi
- Dipinti (trompe l'oil, finte finestre, ecc.)
- Stucchi
- Targhe varie (nomi vie+numeri civici)
- Latteneria
- Muratura mista



SNT_03

SNT_04



TAV. 03 SNT- mappatura materiali



SNT_05

SNT_04



Legenda Materiali

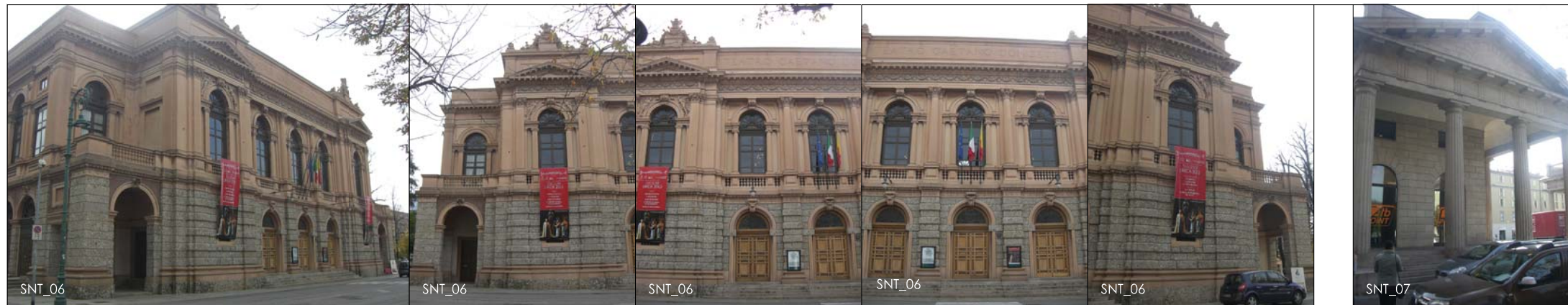
- Intonaco
- Materiale lapideo
- Cemento strallato
- Litocemento
- Metallo
- Legno
- Laterizi
- Dipinti (trompe l'oil, finte finestre, ecc.)
- Stucchi
- Targhe varie (nomi vie+numeri civici)
- Lattoneria
- Muratura mista



SNT_05

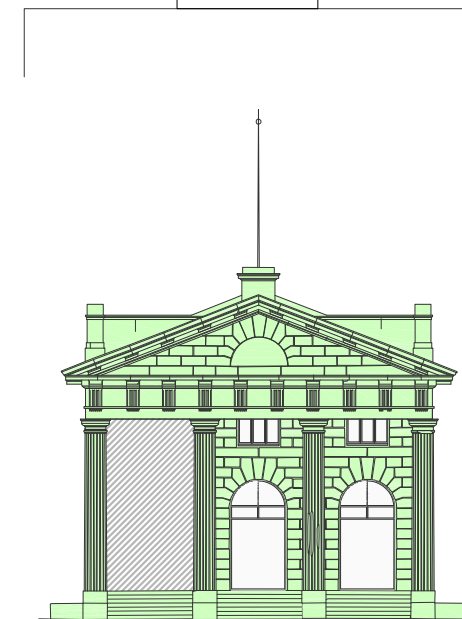


TAV. 04 SNT- mappatura materiali



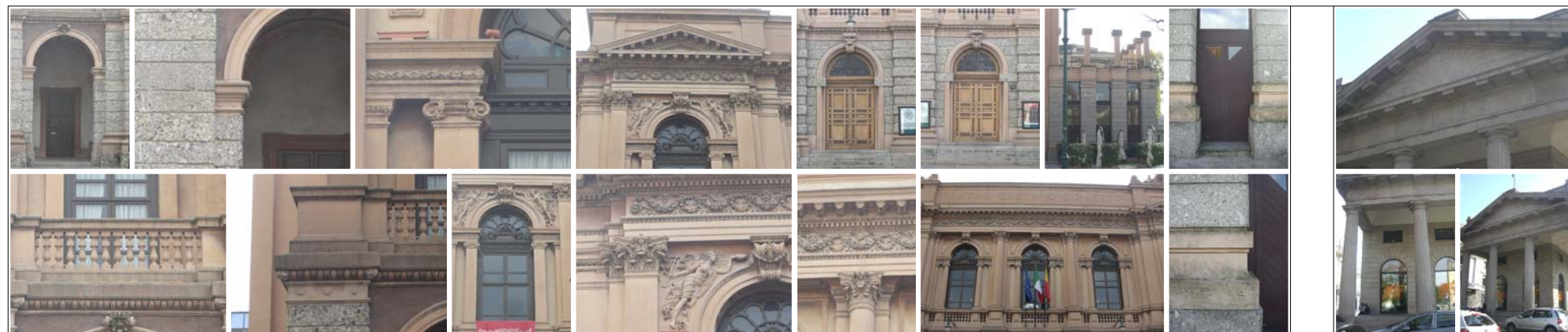
SNT_06

SNT_07



Legenda Materiali

- Intonaco
- Materiale lapideo
- Cemento strallato
- Litocemento
- Metallo
- Legno
- Laterizi
- Dipinti (trompe l'oil, finte finestre, ecc.)
- Stucchi
- Targhe varie (nomi vie+numeri civici)
- Lattoneria
- Muratura mista



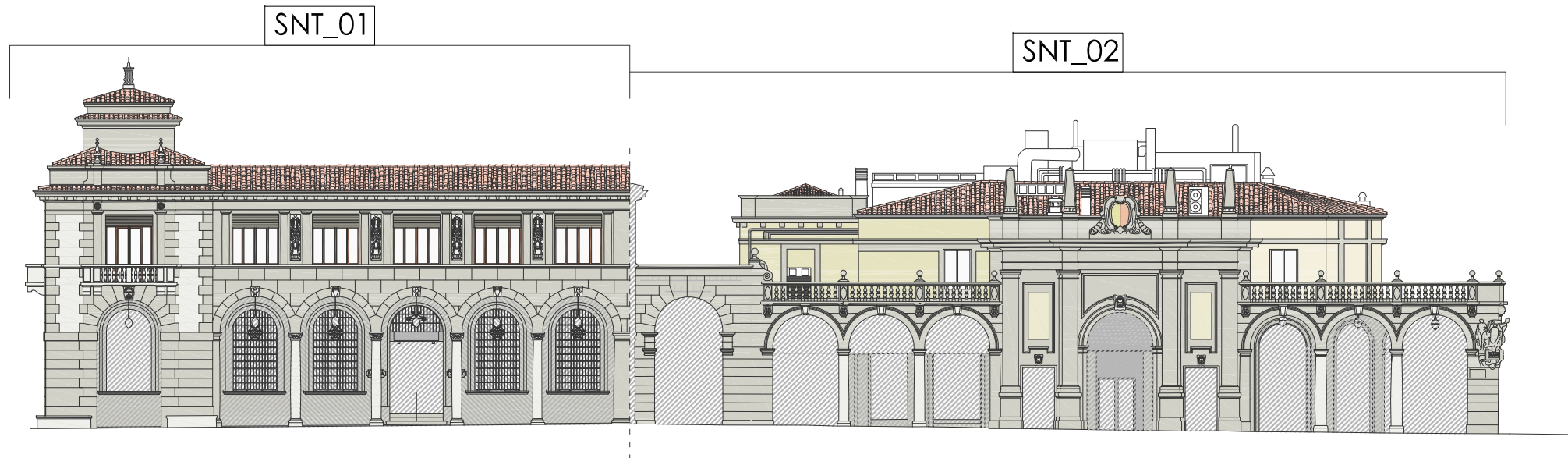
SNT_06

SNT_07



STATO DI FATTO





TAV. 01 SNT- stato di fatto



SNT_01

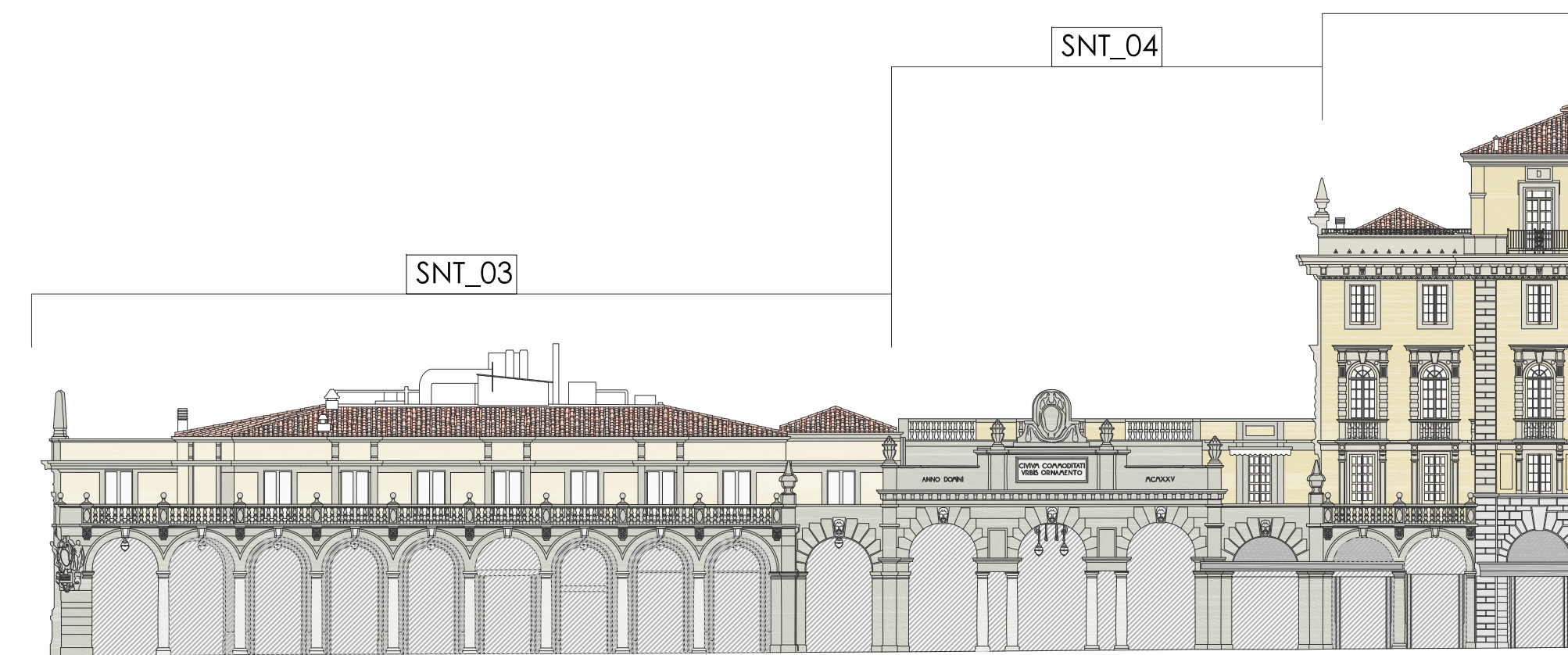
SNT_02

Legenda

-  Edifici vincolati come bene culturale
-  Edifici vincolati al rispetto del complesso monumentale
-  Elementi Architettonici vincolati (facciate, portali, resti delle murature)
-  Facciate con elementi decorativi dipinti (tracce e/o frammenti di decorazioni pittoriche, stemmi, meridiane, finte finestre, modanature, ecc...)







TAV. 02 SNT- stato di fatto

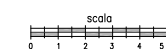


SNT_03

SNT_04

Legenda

-  Edifici vincolati come bene culturale
-  Edifici vincolati al rispetto del complesso monumentale
-  Elementi Architettonici vincolati (facciate, portali, resti delle murature)
-  Facciate con elementi decorativi dipinti (tracce e/o frammenti di decorazioni pittoriche, stemmi, meridiane, finte finte finestre, modanature, ecc...)



TAV. 03 SNT- stato di fatto



SNT_05

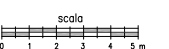
SNT_04



SNT_05

Legenda

- Edifici vincolati come bene culturale
- Edifici vincolati al rispetto del complesso monumentale
- Elementi Architettonici vincolati (facciate, portali, resti delle murature)
- Facciate con elementi decorativi dipinti (tracce e/o frammenti di decorazioni pittoriche, stemmi, merdiane, finte finte finestre, modanature, ecc...)

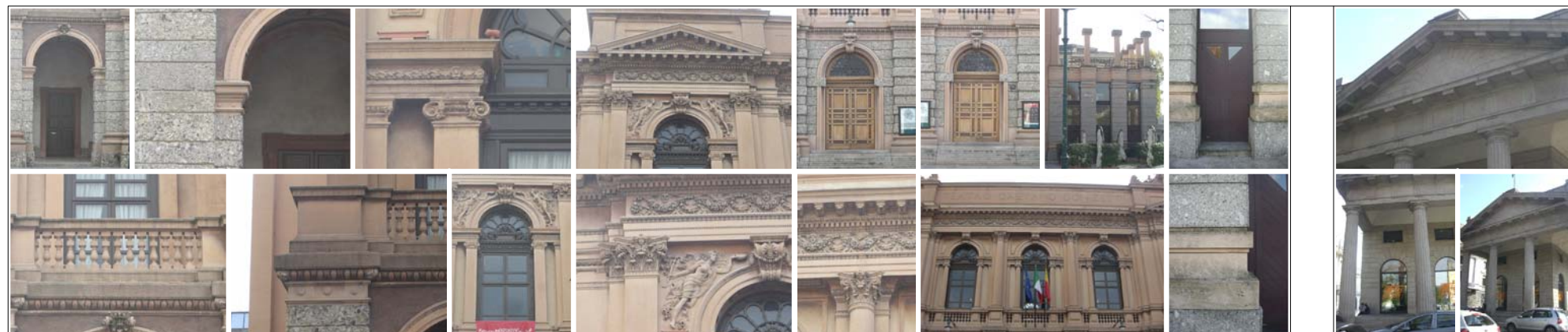
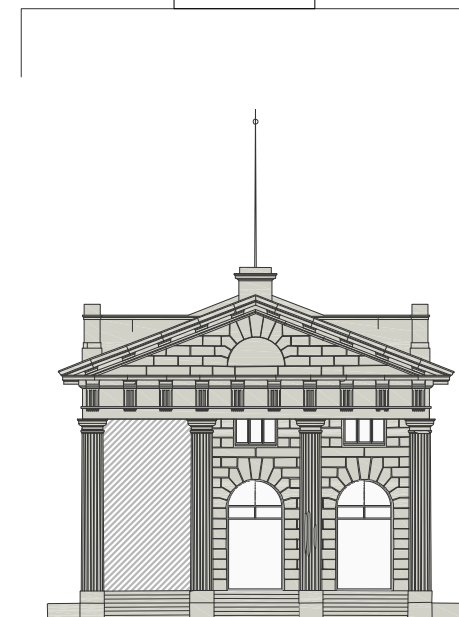
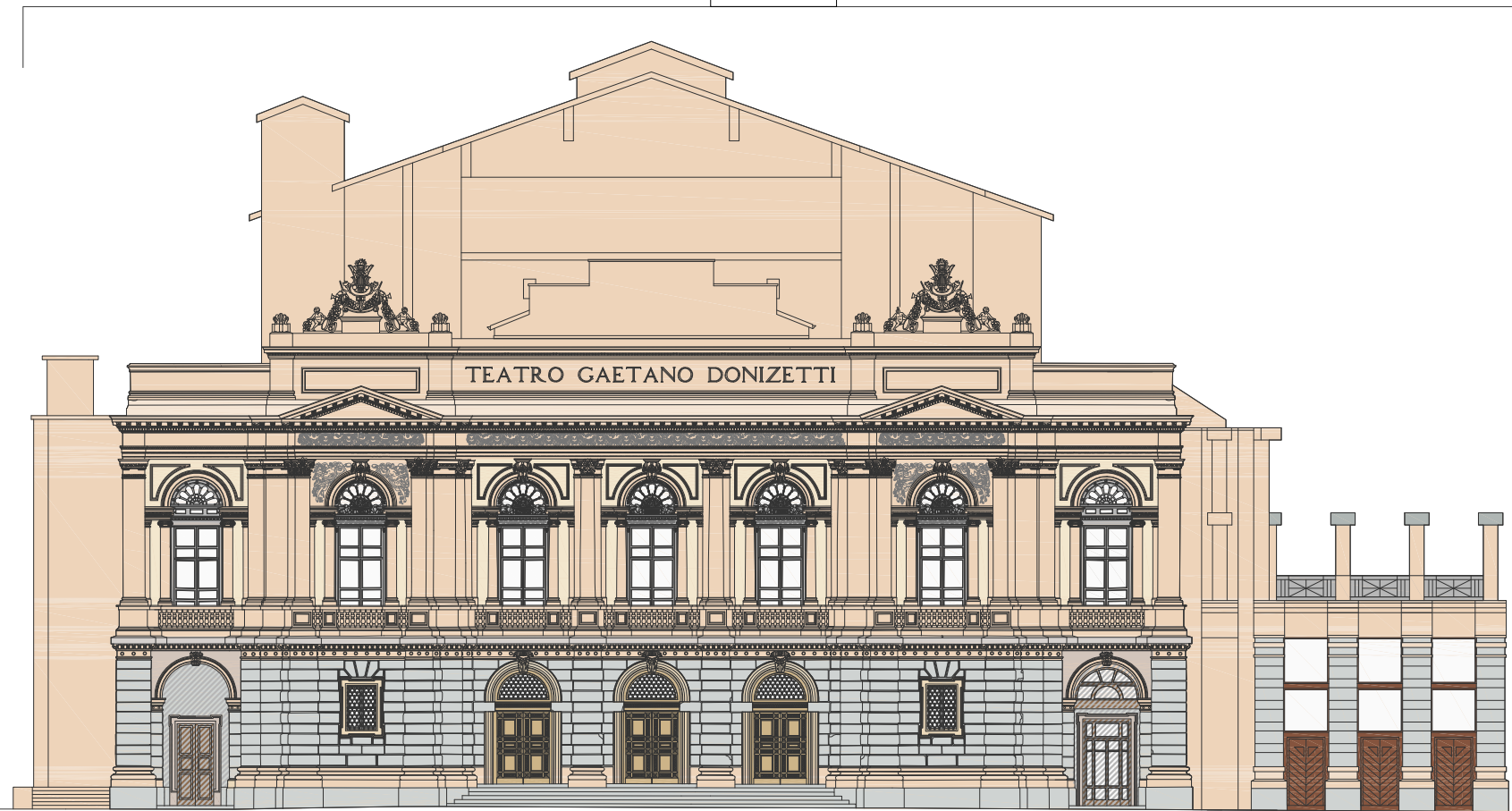


TAV. 04 SNT- stato di fatto



SNT_06





SNT_07



SNT_06

SNT_07

Legenda

-  Edifici vincolati come bene culturale
-  Edifici vincolati al rispetto del complesso monumentale
-  Elementi Architettonici vincolati (facciate, portali, resti delle muraine)
-  Facciate con elementi decorativi dipinti (tracce e/o frammenti di decorazioni pittoriche, stemmi, meridiane, finte finestre, modanature, ecc...)

