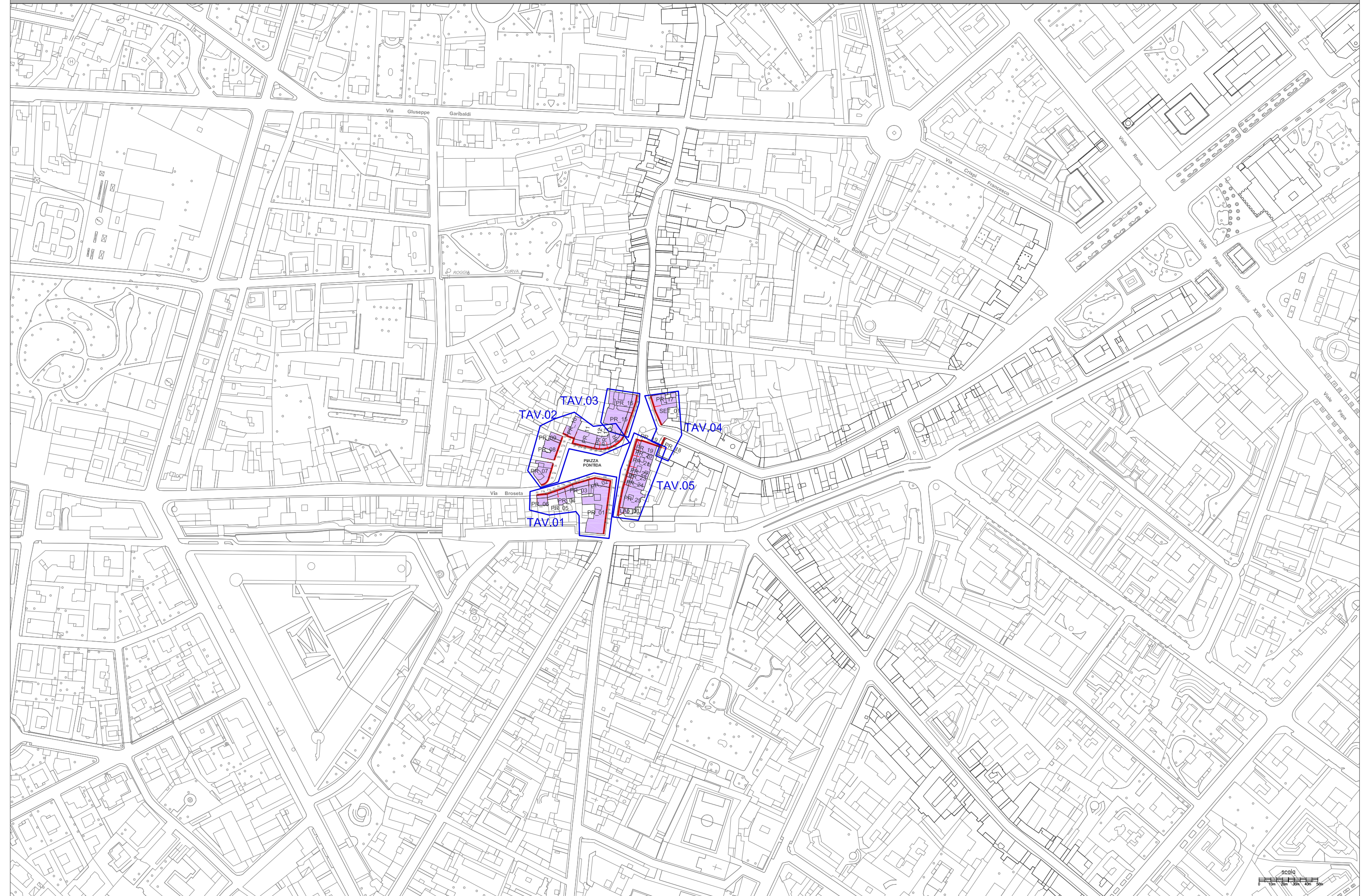


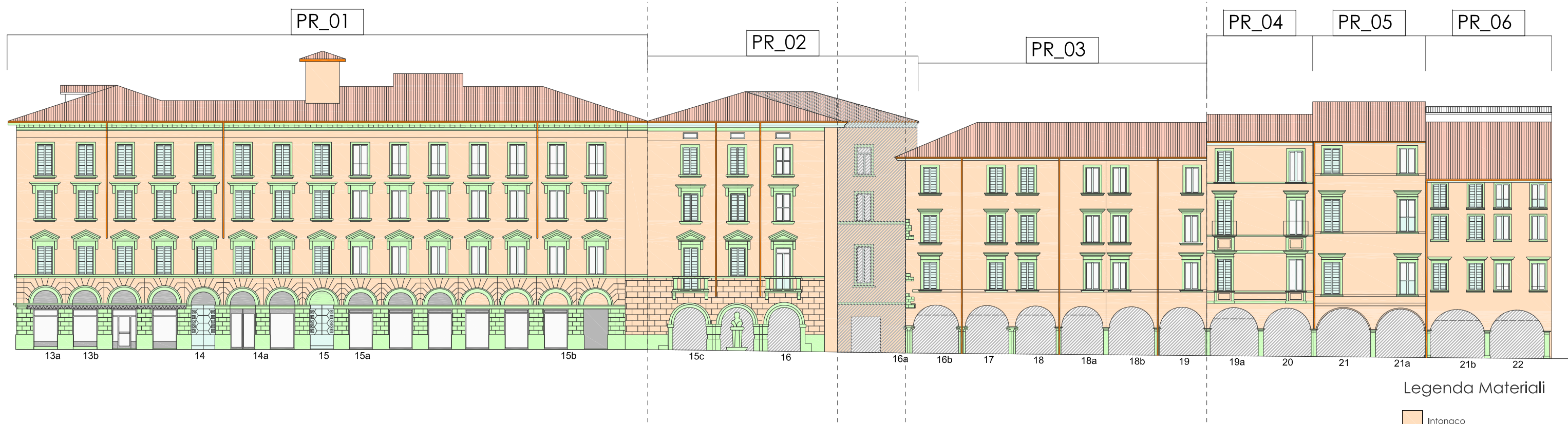
PIAZZA PONTIDA - LARGO NICCOLO' REZZARA

INQUADRAMENTO PIAZZA PONTIDA/LARGO REZZARA_PR



MAPPATURA MATERIALI

TAV. 01 PR - mappatura materiali



Legenda Materiali

- Intonaco
- Materiale lapideo
- Cemento strallato
- Litocemento
- Metallo
- Legno
- Laterizi
- Dipinti (trompe l'oil, finte finestre, ecc.)
- Stucchi
- Targhe varie (nomi vie+numeri civici)
- Lattoneria
- Muratura mista



PR_01

PR_02

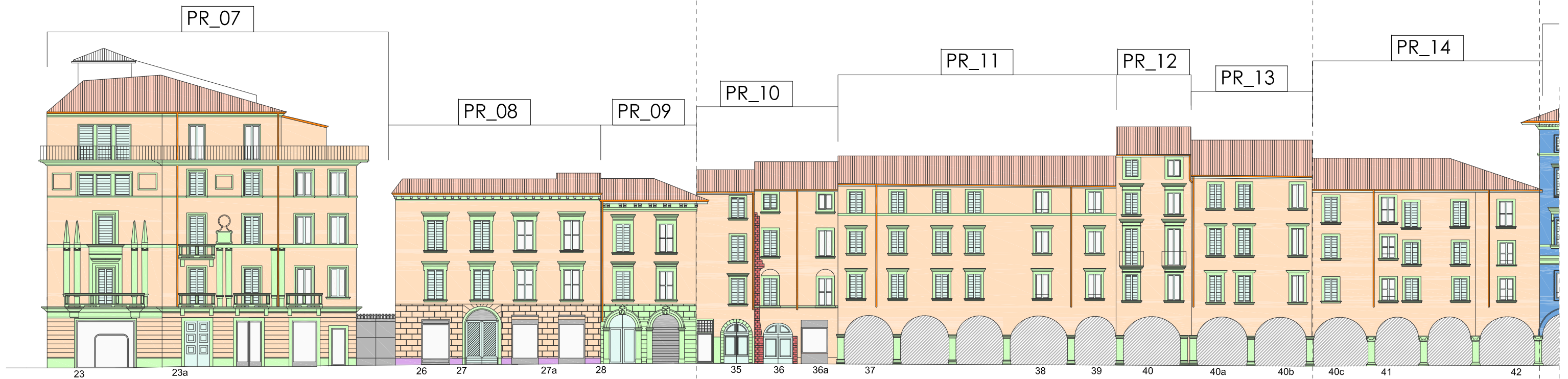
PR_03

PR_04

PR_05

PR_06

TAV. 02 PR - mappatura materiali



Legenda Materiali

- Intonaco
- Materiale lapideo
- Cemento strallato
- Laterizi
- Metallo
- Legno
- Dipinti (trompe l'oil, finte finestre, ecc.)
- Stucchi
- Targhe varie (nomi vie+numeri civici)
- Latteneria
- Muratura mista



PR_07

PR_08

PR_09

PR_10

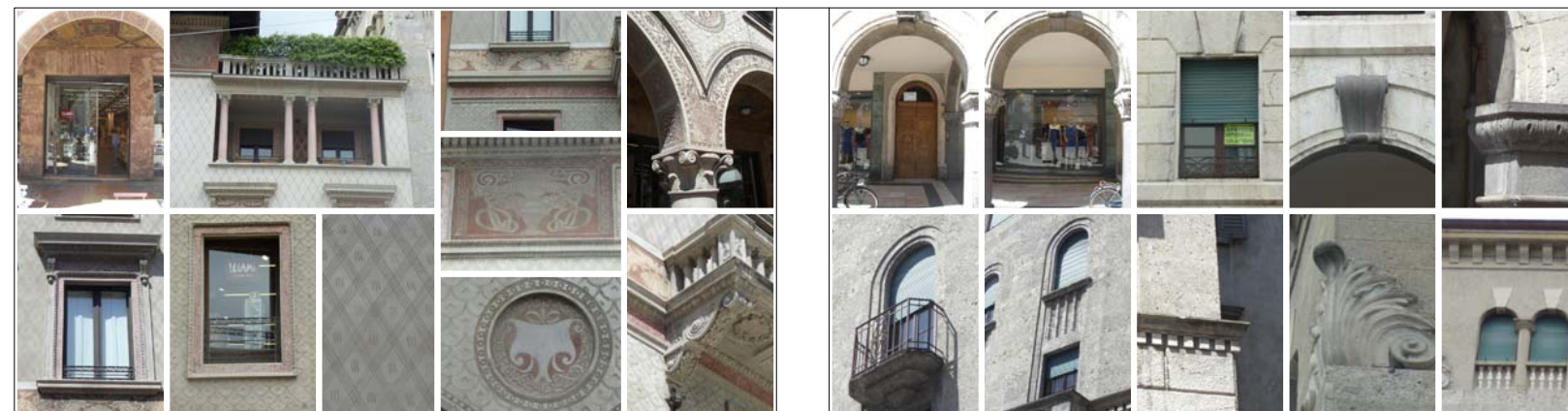
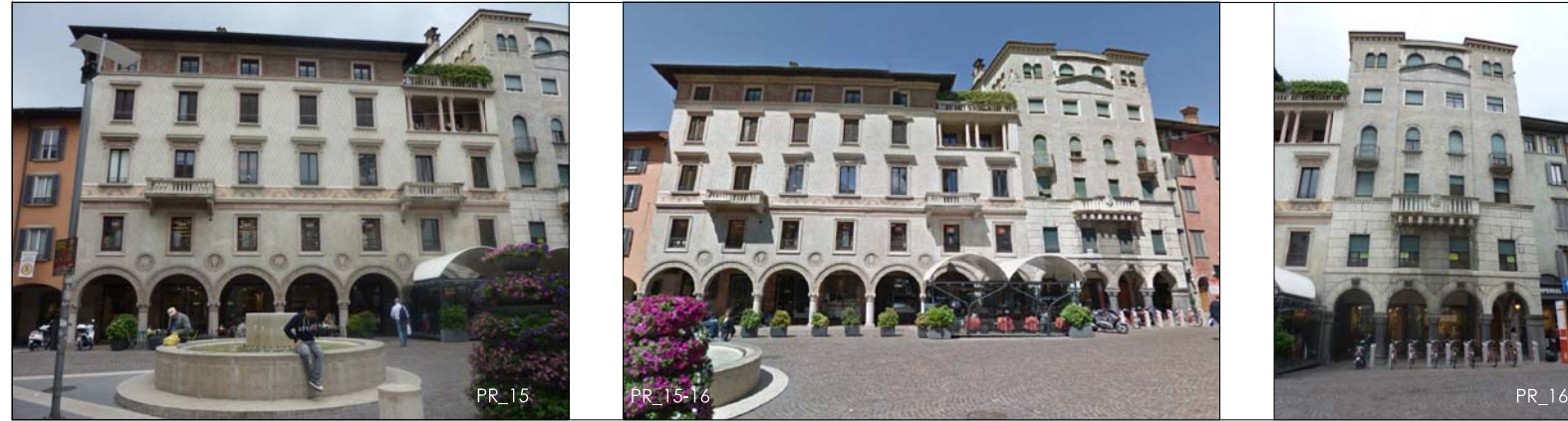
PR_11

PR_12

PR_14



TAV. 03 PR - mappatura materiali



PR_15

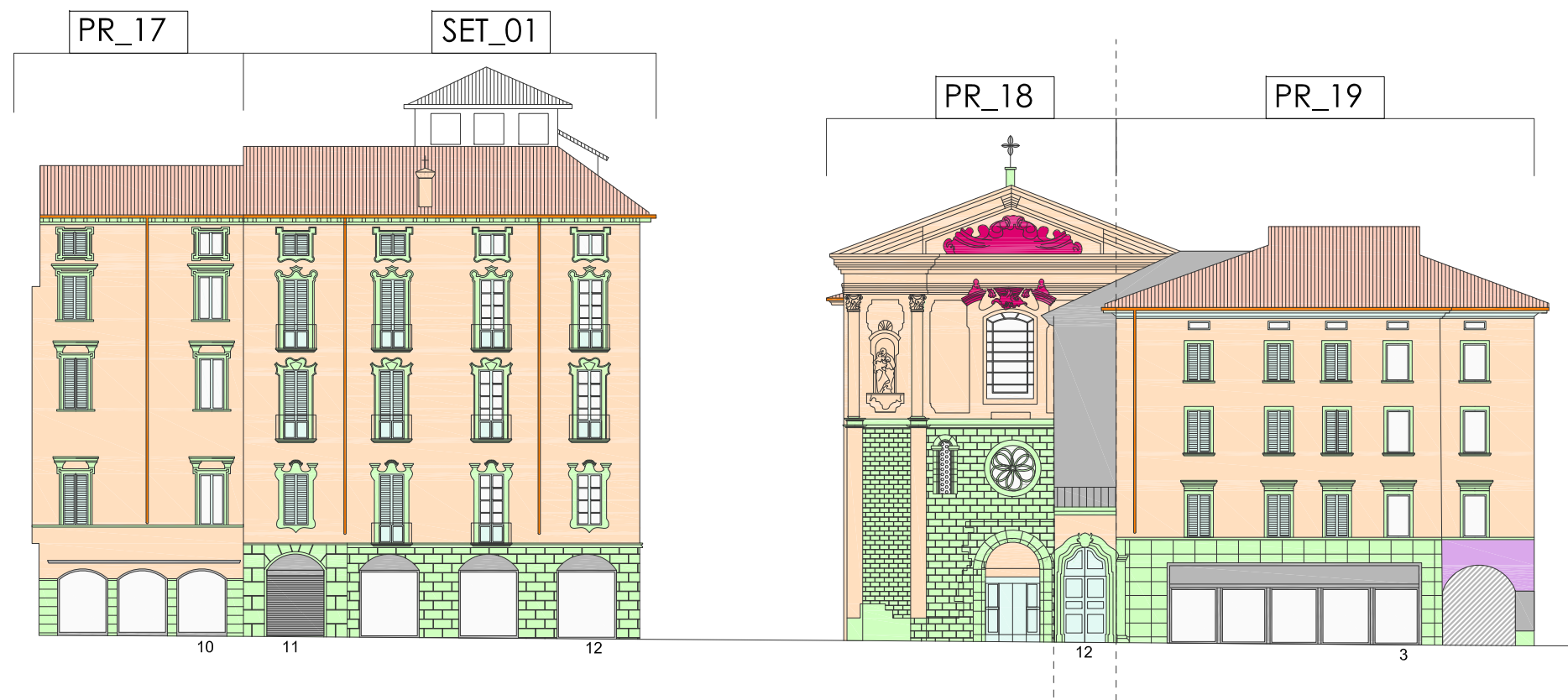
PR_16

Legenda Materiali

- Intonaco
- Materiale lapideo
- Cemento strollato
- Litocemento
- Metallo
- Legno
- Laterizi
- Dipinti (trompe l'oil, finte finestre, ecc.)
- Stucchi
- Targhe varie (nomi vie+numeri civici)
- Lattineria
- Muratura mista

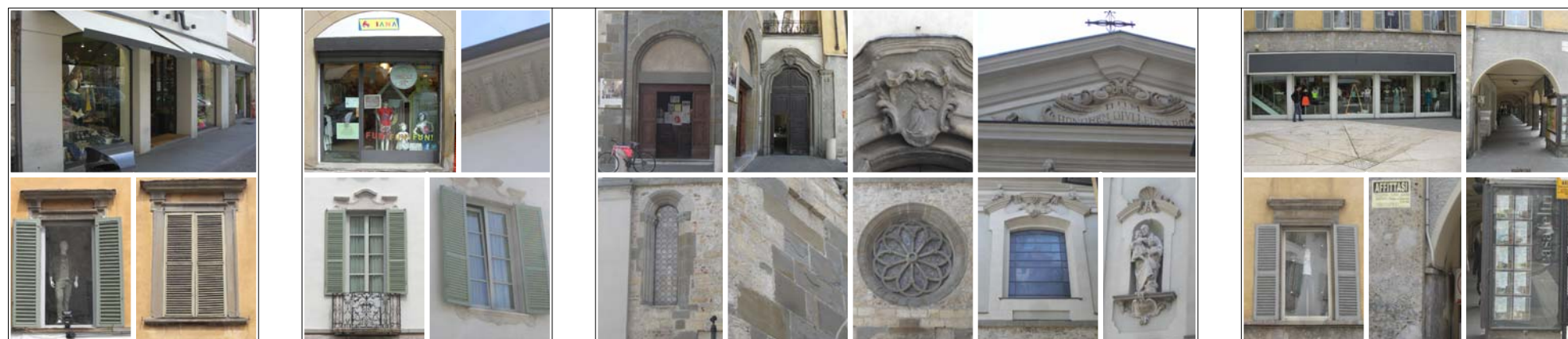


TAV. 04 PR - mappatura materiali



Legenda Materiali

- Intonaco
- Materiale lapideo
- Cemento strollato
- Litocemento
- Metallo
- Legno
- Laterizi
- Dipinti (trompe l'oil, finte finestre, ecc.)
- Stucchi
- Targhe varie (nomi vie+numeri civici)
- Lattoneria
- Muratura mista

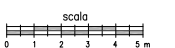


PR_17

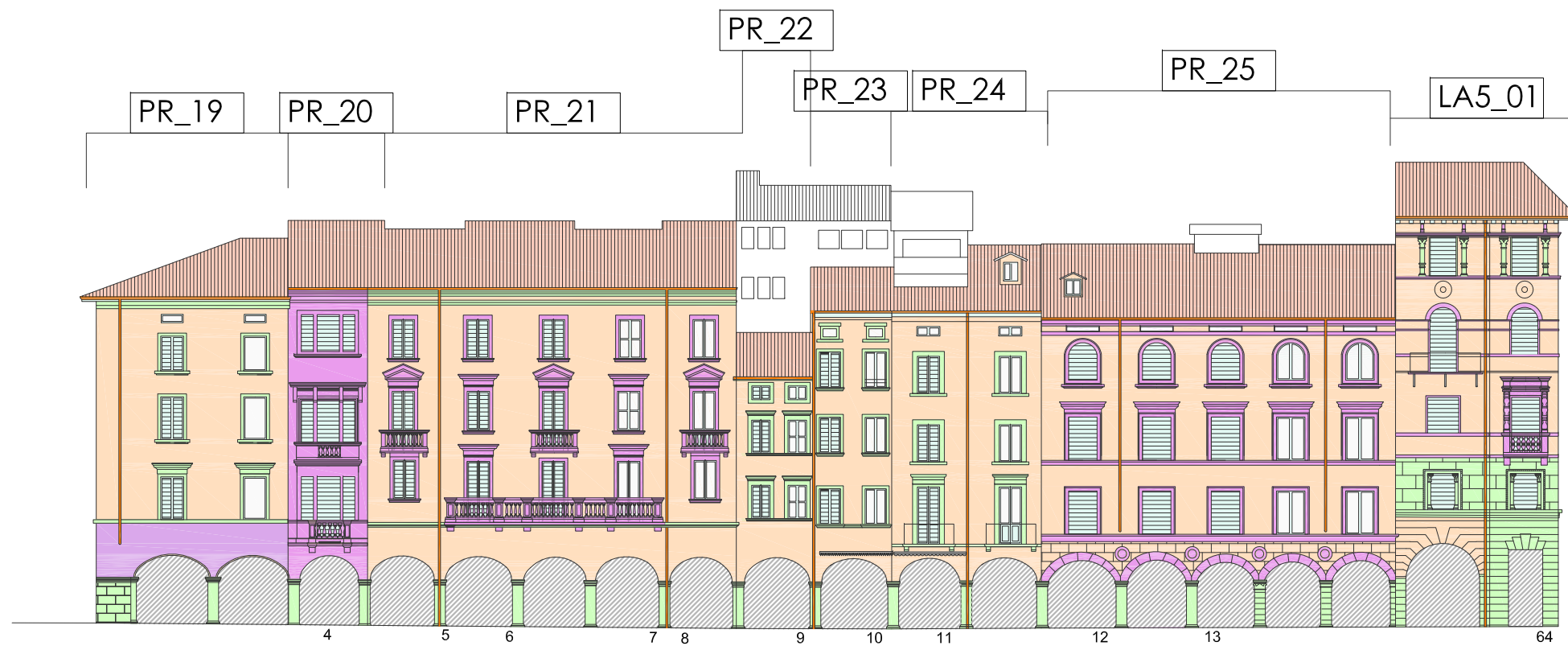
SET_01

PR_18

PR_19



TAV. 05 PR - mappatura materiali



Legenda Materiali

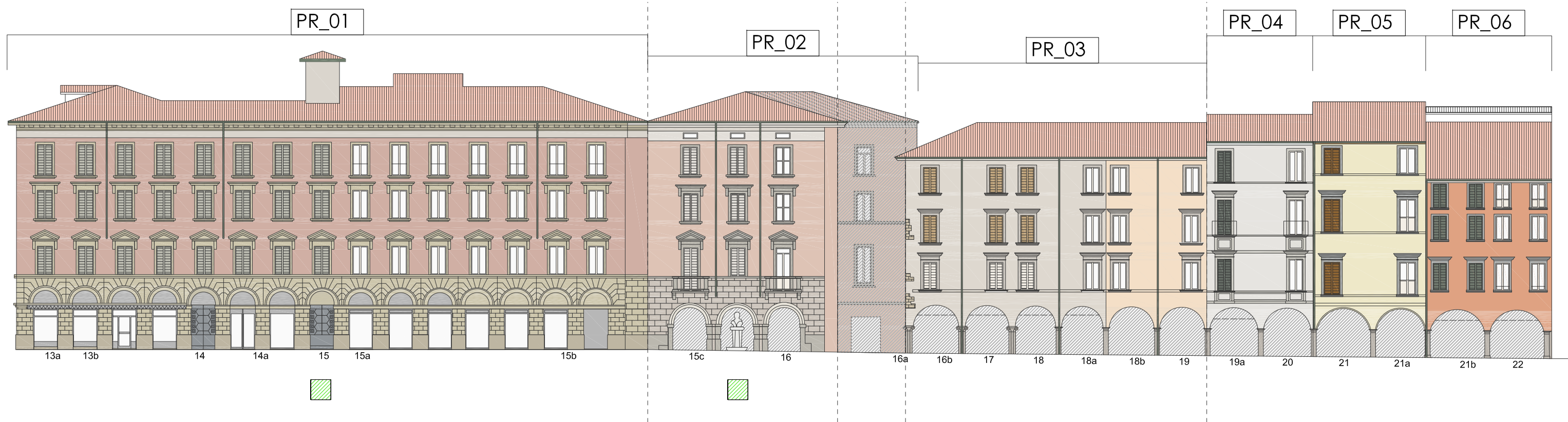
- Intonaco
- Materiale lapideo
- Cemento strollato
- Litocemento
- Metallo
- Legno
- Laterizi
- Dipinti (trompe l'oil, finte finestre, ecc.)
- Stucchi
- Targhe varie (nomi vie+numeri civici)
- Latteneria
- Muratura mista







PR_19 PR_20 PR_21 PR_22 PR_23 PR_24 PR_25 LA5_01

STATO DI FATTO

TAV. 01 PR - stato di fatto



Legenda

-  Edifici vincolati come bene culturale
-  Edifici vincolati al rispetto del complesso monumentale
-  Elementi Architettonici vincolati (facciate, portali, resti delle muraine)
-  Facciate con elementi decorativi dipinti (tracce e/o frammenti di decorazioni pittoriche, stemmi, meridiane, finte finestre, modanature, ecc...)

PR_01

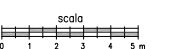
PR_02

PR_03

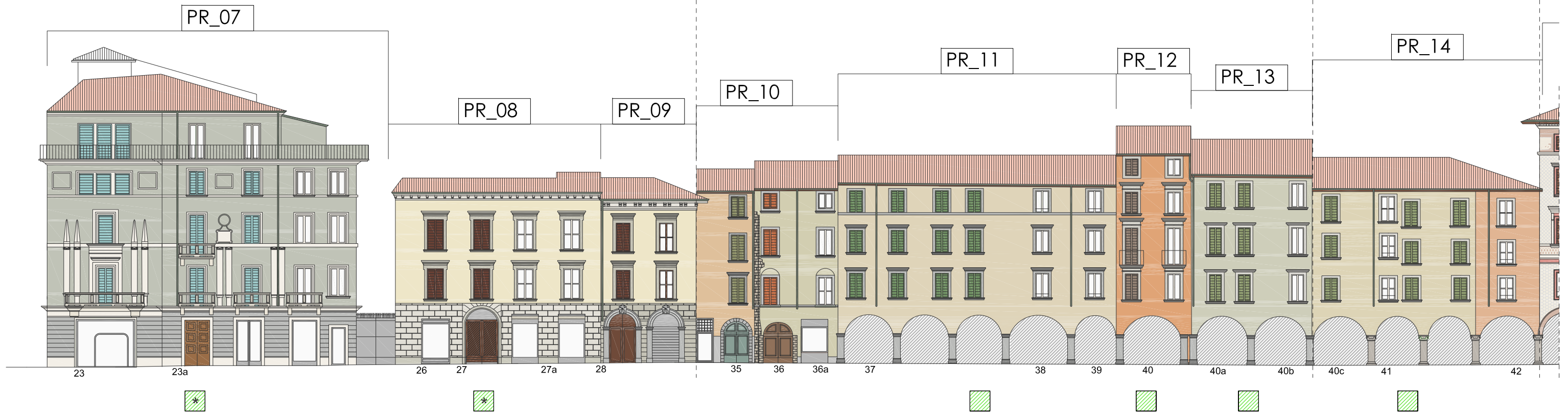
PR_04

PR_05

PR_06



TAV. 02 PR - stato di fatto



PR_07

PR_08

PR_09

PR_10

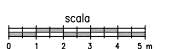
PR_11

PR_12

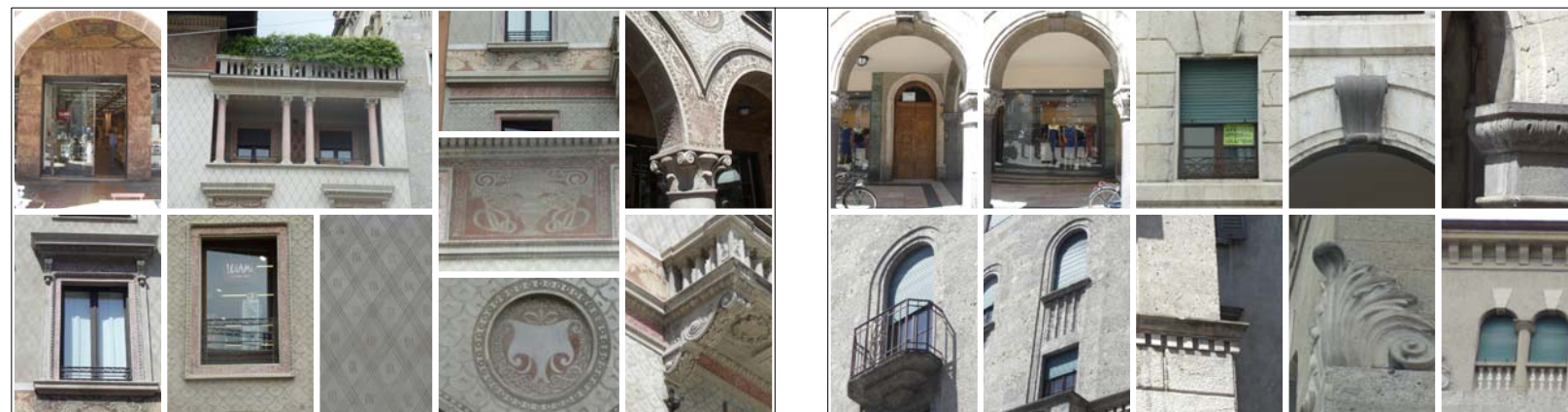
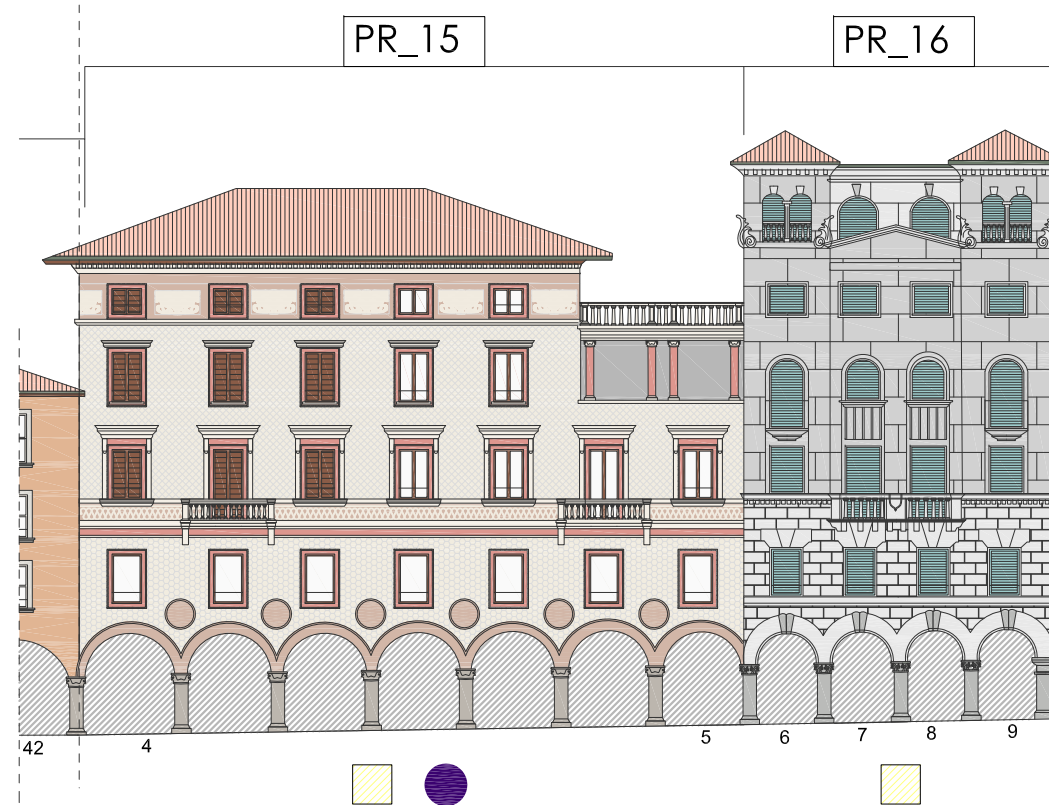
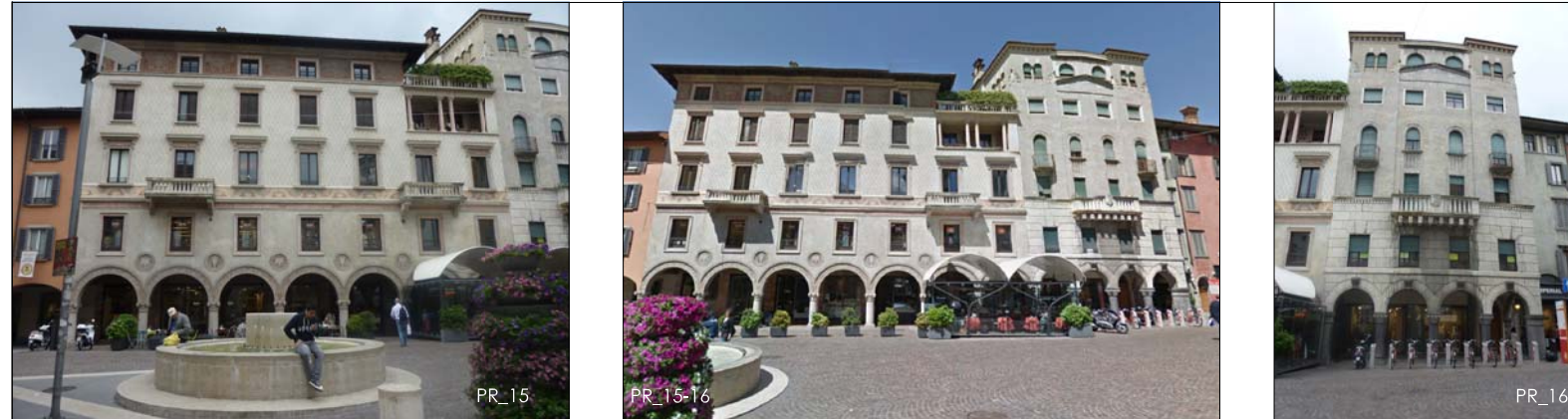
PR_14

Legenda

- Edifici vincolati come bene culturale
- Allegato PdR catalogo borghi storici
- Edifici vincolati al rispetto del complesso monumentale
- Elementi Architettonici vincolati (facciate, portali, resti delle muraine)
- Facciate con elementi decorativi dipinti (tracce e/o frammenti di decorazioni pittoriche, stemmi, meridiane, finte finestre, modanature, ecc...)







TAV. 03 PR - stato di fatto



PR_15

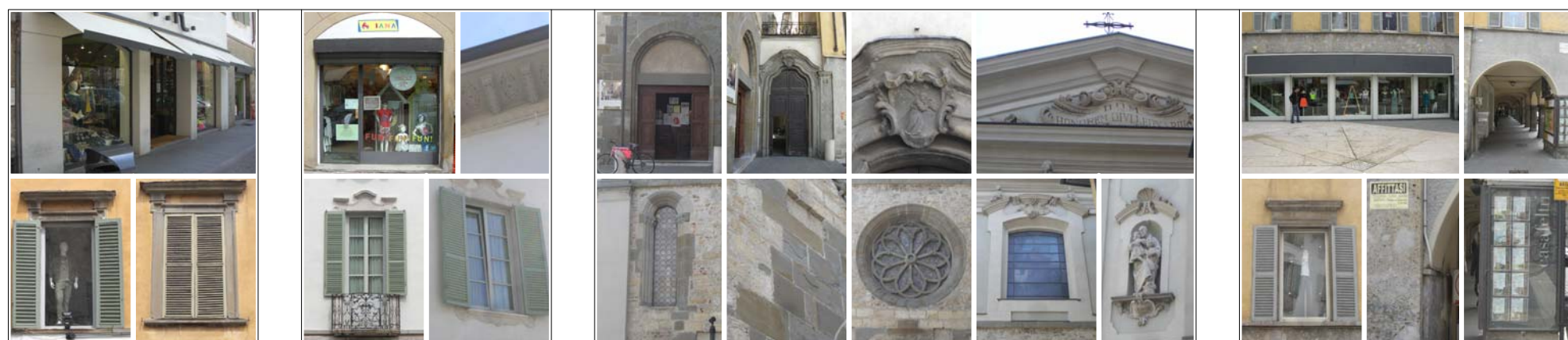
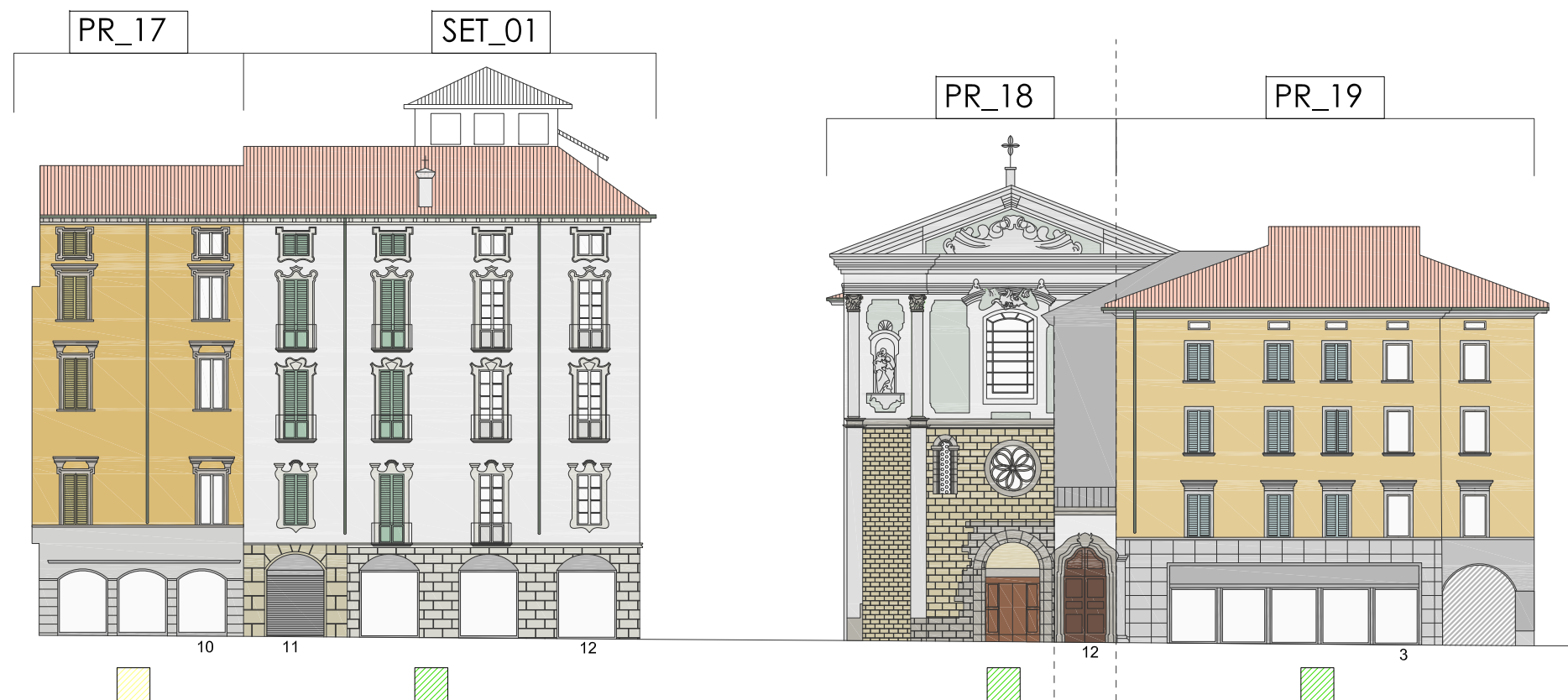
PR_16

Legenda

-  Edifici vincolati come bene culturale
-  Edifici vincolati al rispetto del complesso monumentale
-  Elementi Architettonici vincolati (facciate, portali, resti delle murature)
-  Facciate con elementi decorativi dipinti (tracce e/o frammenti di decorazioni pittoriche, stemmi, merdiane, finte finte finestre, modanature, ecc...)



TAV. 04 PR - stato di fatto







PR_17

SET_01

PR_18

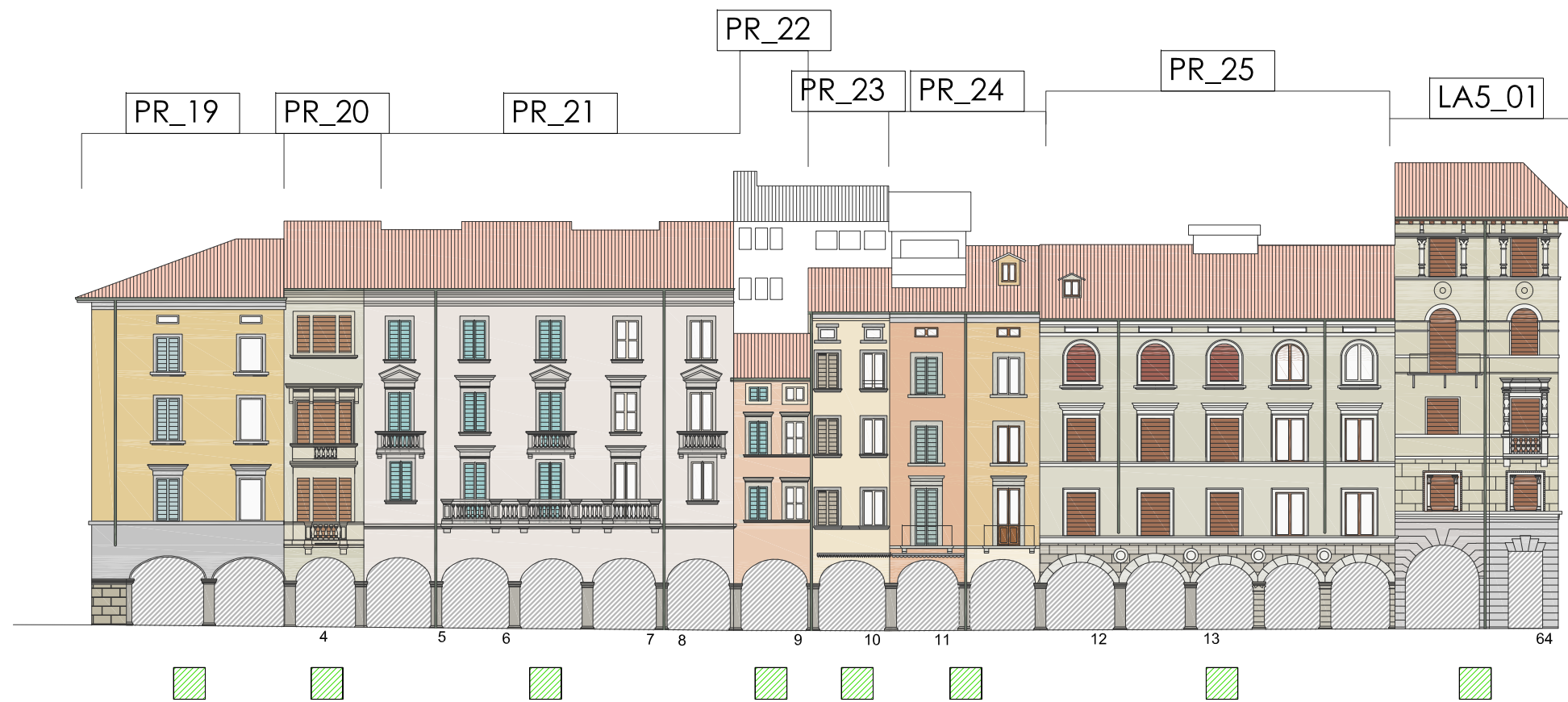
PR_19

Legenda

-  Edifici vincolati come bene culturale
-  Edifici vincolati al rispetto del complesso monumentale
-  Elementi Architettonici vincolati (facciate, portali, resti delle muraine)
-  Facciate con elementi decorativi dipinti (tracce e/o frammenti di decorazioni pittoriche, stemmi, meridiane, finte finte finestre, modanature, ecc...)







TAV. 05 PR - stato di fatto



PR_19 PR_20 PR_21 PR_22 PR_23 PR_24 PR_25 LA5_01

Legenda

-  Edifici vincolati come bene culturale
-  Edifici vincolati al rispetto del complesso monumentale
-  Elementi Architettonici vincolati (facciate, portali, resti delle muraine)
-  Facciate con elementi decorativi dipinti (tracce e/o frammenti di decorazioni pittoriche, stemmi, meridiane, finte finestre, modanature, ecc...)

